

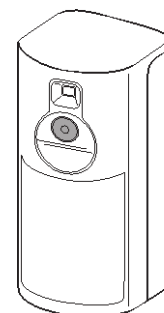
Installation and Setup Instructions

The **PROINDMV-EU** is a battery powered, wireless indoor motion detector with a built-in video camera and is designed for use with Control Panels that support SiX™ series devices. The detector is powered by three 3-volt, Lithium batteries that provide up to 4 years of battery life.

Note: Installation shall be performed in accordance with local regulations.

FEATURES

- No wiring or remote power required. Fully portable battery powered camera allows for flexibility in selecting locations.
- Provides video on-demand viewing functionality.
- Spread Spectrum, Interactive, AES encrypted wireless technology provides optimum signal integrity and security.
- CMOS camera sensor with a wide angle 90° lens (horizontal field of view).
- Embedded illuminator for night vision (white light).
- PIR sensor and Fresnel lens for motion detection (12m and 90° detection pattern).
- Camera sends color video.

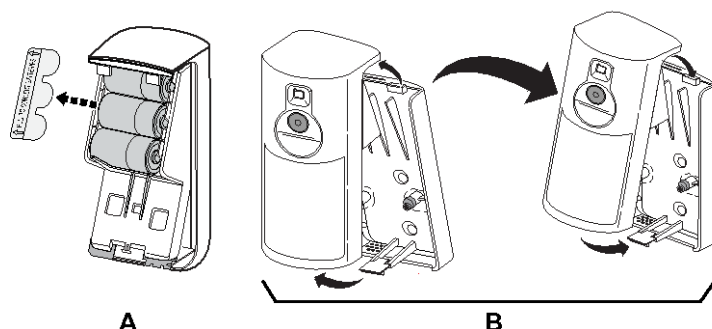


ENROLLING

You must enroll the detector in the Control panel. Set the Control panel in the Programming Mode, and when prompted:

Note: For detailed programming instructions, refer to the Installation Instructions for the Control Panel with which this device is used.

1. From AlarmNet 360:
 - Select "SENSORS"
 - Select "ADD SENSOR"
 - Select "LEARN" and wait for the Control Panel to be in learning mode.
2. When prompted, perform one of the following:
 - Carefully remove (and discard responsibly) the battery tab **[A]**.
 - If powered, open and close the cover again **[B]**.
3. The LED flashes rapidly at power up.



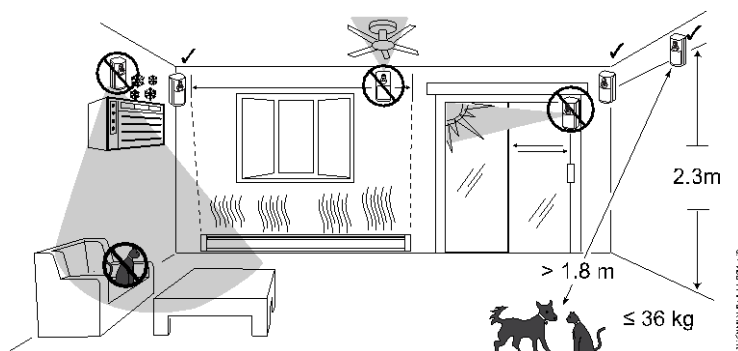
Note: After enrolling, verify adequate signal strength by conducting a sensor test with the device installed in its intended mounting location (see the Control Panel instructions). Adjust the device mounting location and orientation as necessary to achieve maximum signal strength.

INSTALLATION GUIDELINES

Programming and RF testing should be done while the device is in its intended mounting location to ensure good communication between the Control Panel and the device.

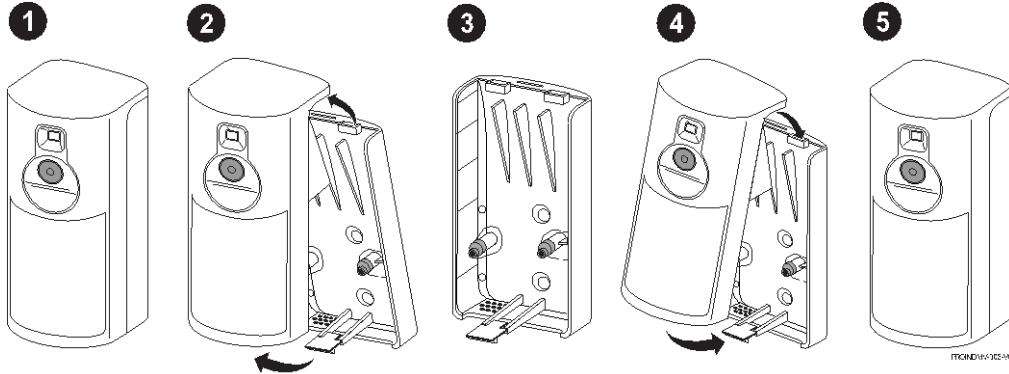
Mounting Considerations:

- Mount indoors in a temperature-controlled environment.
- Mounting height should be 2.1 – 2.7 m, with an optimal range height of 2.3 m.
- Allow a clear line-of-sight to all areas to protect.
- Do not aim detector at windows, especially those in direct sunlight, or at heat sources (fireplaces, radiators, and heating vents, etc.).
- Avoid mounting in areas with high humidity (such as garages) to minimize the risk of false alarms.
- Do not aim detector at moving objects such as fans.
- Do not paint or cover the detection or camera lens.
- For use in applications with pets up to 36 kg (with PIR "Low Sensitivity" setting selected from the Control Panel).



MOUNTING

1. Press the latch on the bottom of the detector.
2. Separate the front housing from the rear mounting plate.
3. Secure the rear mounting plate at the desired location with two screws. (See the **Mounting Options** section.)
Note: Rear mounting plate must be mounted on a stud, solid wall, or with a robust wall anchor.
4. Slide the front housing onto the rear mounting plate.



Mounting Options

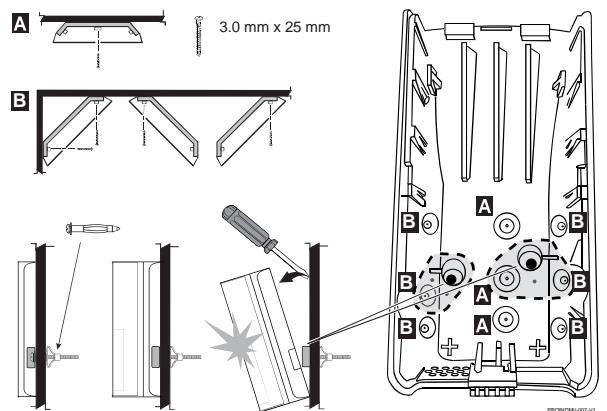
After enrolling, verify adequate signal strength by conducting a sensor test with the detector installed in its intended mounting location (see the Control Panel instructions). Adjust the detector mounting location and orientation as necessary to achieve maximum signal strength.

The detector can be mounted on the wall or in corners:

- **[A]** = Wall Mounting Holes
- **[B]** = Corner Mounting Holes

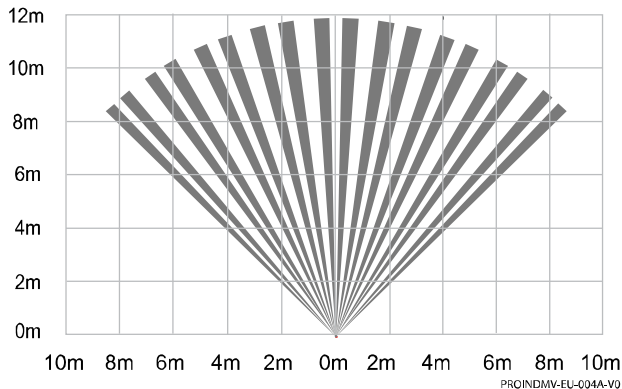
The rear tamper plate **MUST** be mounted to a stud, solid wood, or with a robust wall anchor.

Note: Do not aim the detector at windows, especially those that are in direct sunlight, or at heat sources (fireplaces, radiators, and heating vents, etc.).

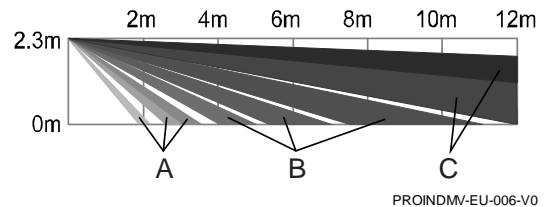


DETECTION PATTERNS

Top View



Side View



Zones

- | | | |
|----------|-----------|--------------|
| A | 18 | Lower |
| B | 46 | Intermediate |
| C | 36 | Long |

WALK TEST

After enrolling, you can use the Control Panel to perform a 10-minute Walk Test mode for the sensor. With the detector in its intended mounting location, adjust the location and orientation as necessary.

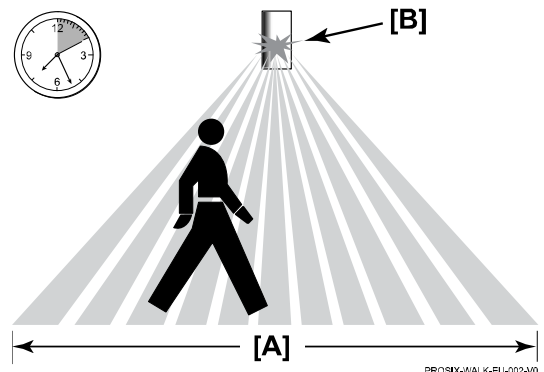
Note: For detailed instructions on performing the Walk Test, refer to the Installation Instructions for the Control Panel.

1. Walk through the detection area **[A]** and observe the LED **[B]** comes ON.
2. After 10 minutes, the detector automatically exits the Test mode, disables the LED, and enters a normal operation mode.

To restart a 10-minute Walk Test period, activate the Walk Test mode with the Control Panel (see the Control Panel instructions).

The user can manually stop the Walk Test at any time.

Note: System must be **disarmed** to enter Test Mode and can only be armed again after exiting the Walk Test mode.



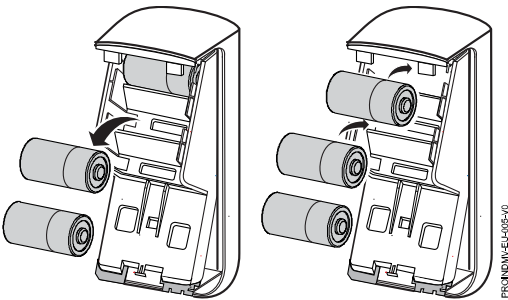
BATTERY REPLACEMENT

The detector is powered by three Lithium batteries. To maximize battery efficiency, it is important to remove all of the old batteries, wait approximately 10 seconds, and then install new batteries.

Note: See the **Specifications** section for recommended replacement batteries. To ensure good product batter life, do not mix old and new batteries, battery types, or manufacturers.

BATTERY CAUTION:

Risk of fire, explosion, and burns. Do not recharge, disassemble, heat above 55°C, or incinerate. Dispose of used batteries properly. Keep away from children.



SPECIFICATIONS

Battery:	Three (3) 3V Lithium batteries <ul style="list-style-type: none">EVE CR123APANASONIC CR123A	Camera:	Angle (HFOV): 90° Night Video distance: 7m
Nominal voltage:	3 V	Dimensions:	113 mm (H) x 50 mm (W) x 54 mm (D)
Operating temperature	-10° ~ +55° C	Weight:	165 g (including 3 batteries)
Max relative humidity	95%, without condensing	Material:	ABS Plastic
Operating RF frequency:	868 MHz (EMEA)	Tamper:	Wall and cover tamper
		Mounting height	2.3 m (optimal range height)



2621420038
www.cnpp.com
www.marque-nf.com



The product should not be disposed of with other household waste. Check for the nearest authorized collection centers or authorized recyclers. The correct disposal of end-of-life equipment will help prevent potential negative consequences for the environment and human health.

Product must be tested at least once each year

Any attempt to reverse-engineer this device by decoding proprietary protocols, de-compiling firmware, or any similar actions is strictly prohibited.

REFER TO THE INSTALLATION INSTRUCTIONS FOR THE CONTROL PANEL WITH WHICH THIS DEVICE IS USED, FOR DETAILS REGARDING LIMITATIONS OF THE ENTIRE ALARM SYSTEM.

SUPPORT & WARRANTY INFORMATION

For the latest documentation, support, and warranty, please go to:
www.resideo.com



DOCUMENTATION



SUPPORT



WARRANTY



Sécurité Communications SAS (SECOM)
1198, Avenue du Docteur Maurice Donat
06250 Mougins - FRANCE



Ademco 1 Ltd., 200 Berkshire Place
Winnersh Triangle, Berkshire,
RG41 5RD – UNITED KINGDOM

PROINDMV-EU



R800-26481C 10/21 Rev C

resideo

© 2023 Resideo Technologies, Inc.
www.resideo.com